


**Moving you
forward.**

 **Heat transfer solutions
for mobile applications.**

Taking the mobile market to the next level.

In today's industry, you need to do more with less. More power, more efficiency. Less size, less weight. Which is why having the right heat transfer partner is so crucial. At API Heat Transfer, we work tirelessly with your team to engineer a solution that meets your specifications, minimizes weight, conforms to your space limitations, is suitable for the vehicle's working environment, and meets the cooling demands of ever-more challenging emissions requirements.

With manufacturing facilities in the United States, Germany, and China, plus sales and engineering support in more than 30 countries, our reach is global. But our approach is always personal. With a heritage of more than 130 years and expertise that spans three heat transfer technologies – air-cooled, plate, and shell and tube – we deliver the appropriate solutions that match your unique needs. So save time and money by working with an experienced partner who will design the cooling system right the first time.



"We've seen a 50% weight reduction in the overall cooling package. API Heat Transfer worked hand in hand with us to develop the whole system, not an out-of-the-box solution."

– Senior Project Engineer, Mobile Market





The highest degree of performance.

The cornerstone of API Heat Transfer is our devotion to innovation and validation. We are proud of the engineering value we bring to each and every project. And you can be sure every product that passes through our facilities has been rigorously tested to the highest standards in the industry.

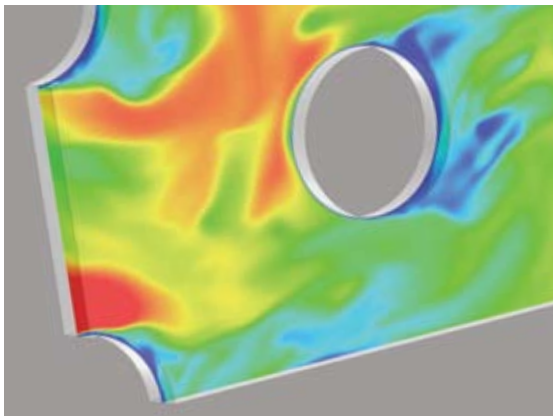
Our Buffalo, NY lab features a state-of-the-art high-capacity Calorimetric Flow Test Stand with semi-open loop temperature control, so we can accurately simulate actual engine conditions for both flow and temperature.

As part of our wide range of capabilities, we use CFD software to continually design better-performing fins for our heat exchangers.

Plus, we work with established partners for specialized validation, including vibration testing, salt spray, corrosion, and metallurgy evaluation. By investing in and harnessing cutting-edge technology, we can deliver more duty and heat rejection in smaller spaces than ever before – giving your application the edge you've been looking for.

Our core in-house capabilities include:

- Product development
- Software development
- Thermal performance testing
- Pressure drop validation
- Pressure cycling
- Thermal cycling
- Computational fluid dynamics (CFD)



Our experience goes further.

Every mobile application is different, and faces unique challenges. But no matter what industry you're in – from excavators to personal watercrafts – you can rely on API Heat Transfer for the most efficient, most productive solution.

Off-Highway

Agriculture



- Combines
- Sprayers
- Tractors

Construction



- Compactors
- Cranes
- Earth movers
- Excavators
- Pavers

Forestry



- Feller bunchers
- Forwarders
- Harvesters
- Log skidders
- Loggers

Marine



- Commercial
- Pleasure crafts

Material Handling



- Aerial platforms
- Forklifts
- Telehandlers

Military



- Troop transport



On-Highway

Bus/RV



- Coach
- RV
- School
- Transit

Rail



- Air brakes
- Diesel locomotive
- Electric
- Monorail

Truck



- Dump trucks
- Refuse
- Specialty – Class 6 and 7
- Street sweepers



“With API Heat Transfer, we’ve been able to look at different technology, and use a more efficient system to eliminate the need to grow the heat exchangers.”
 – **Senior Project Engineer, Mobile Market**



Successful solutions.

Whether you are looking for individual heat exchangers, combination coolers, or a complete cooling package, API Heat Transfer has the designs and experience you need to thrive in today's mobile market.

Engine cooling packages.

Our fully integrated cooling packages are an efficient solution for diesel engines – saving you precious engineering and manufacturing time. Each package is designed to your needs, and can include a radiator, charge air cooler, oil cooler, shroud, framework, and any other component you may need. The package can be assembled front-to-back or side-to-side.



Combination coolers.






Customizable combination coolers save space in your application, making them ideal for small engines. Based on your requirements, we can combine a radiator, charge air cooler, and oil cooler in one compact unit.

Fan-cooled units.

Our pre-engineered, standard Airtech® fan-cooled oil coolers in aluminum bar and plate construction offer dependable, proven performance for virtually any oil cooling application. Whether installed next to the machinery or on the back of a construction vehicle, these oil coolers provide reliable cooling in the harshest environments. In addition, API Heat Transfer provides the flexibility to meet your special requirements, including designs featuring bypass valves and temperature switches.





| Solutions | Applications | Design | Examples |
|----------------------------------|----------------------------------------------------------------------------------------------------------------------------------------------------------------------------|-----------------------------------------------------------------------------------------------------------------------------------------------------------------------------------|---------------------------------------------------------------------------------------|
| Complete cooling packages | <ul style="list-style-type: none"> ■ Radiators ■ Charge air coolers ■ Oil coolers | <ul style="list-style-type: none"> ■ Air-cooled bar and plate ■ Air-cooled tube and header ■ Shrouds, finger guards, fan blades, expansion tanks |  |
| Radiators | <ul style="list-style-type: none"> ■ Engine cooling | <ul style="list-style-type: none"> ■ Air-cooled bar and plate ■ Air-cooled tube and header ■ Shrouds, finger guards, fan blades, expansion tanks |  |
| Charge air coolers | <ul style="list-style-type: none"> ■ Turbo-charged air cooling | <ul style="list-style-type: none"> ■ Air-cooled bar and plate – high-temperature designs available |  |
| Oil coolers | <ul style="list-style-type: none"> ■ Engine ■ Fuel ■ Transmission ■ Power steering ■ Hydraulic ■ Transfer case | <ul style="list-style-type: none"> ■ Air-cooled bar and plate ■ Shell and tube ■ Plate heat exchangers |  |
| Remote coolers | <ul style="list-style-type: none"> ■ Hydraulic oil | <ul style="list-style-type: none"> ■ Fan-cooled remote heat exchanger – options available to meet your requirements |  |

Built to perform.

- Air-cooled products are 100% aluminum construction, and use a vacuum-braze process, resulting in a high-strength unitary core
- Shell and tube products are offered in a variety of materials, and available in standard or custom designs engineered to fit specific requirements
- Brazed plate heat exchangers are available in 316 stainless steel construction with copper- or nickel-braze material



A world of heat transfer solutions.

API Heat Transfer's global presence includes manufacturing facilities, R&D locations, and sales support throughout the world, all aimed at one goal – to better serve our customers.



For more information about our heat transfer products, contact your API Heat Transfer sales representative or visit apiheattransfer.com.



USA

2777 Walden Avenue
Buffalo, NY, 14225, USA
+1.716.684.6700

91 North Street PO Box 68
Arcade, NY, 14009, USA
+1.585.496.5755

Germany

Langenmorgen 4
75015 Bretten, Germany
+49.7252530

China

First Factory
156 Qing Qiu Street, 3rd District
Suzhou Industrial Park
Suzhou, Jiangsu 215126, China
+86.512.88168000

Second Factory
126 Qing Qiu Street, 3rd District
Suzhou Industrial Park
Suzhou, Jiangsu 215126, China
+86.512.88168000